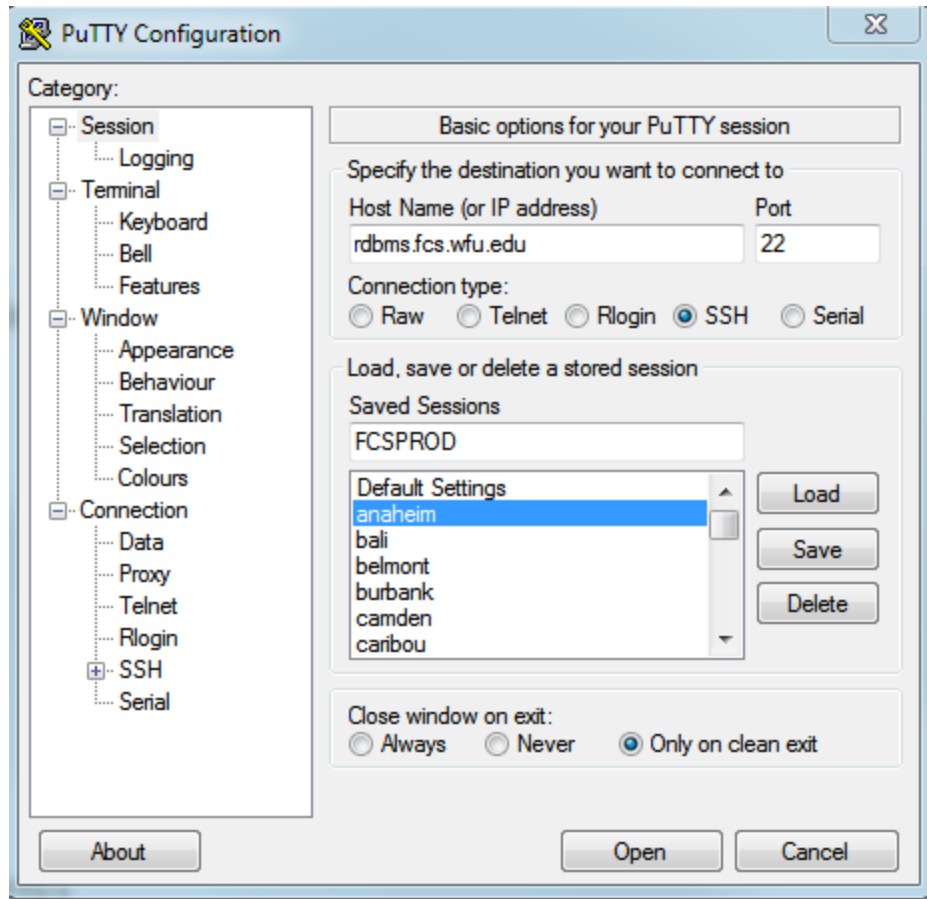


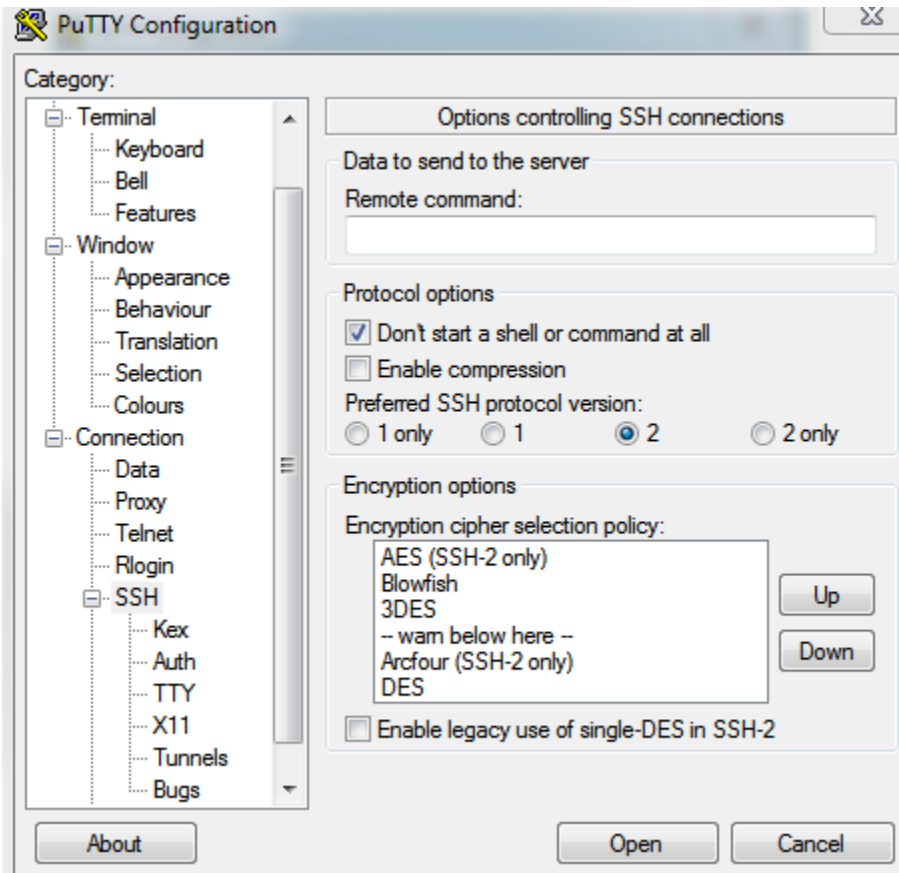
puTTY

1. Enter the hostname in the Session section

rdbms.archibus.facilities.wfu.edu



2. Select the checkbox "Don't start a shell or command at all" under the Connection -> SSH section.

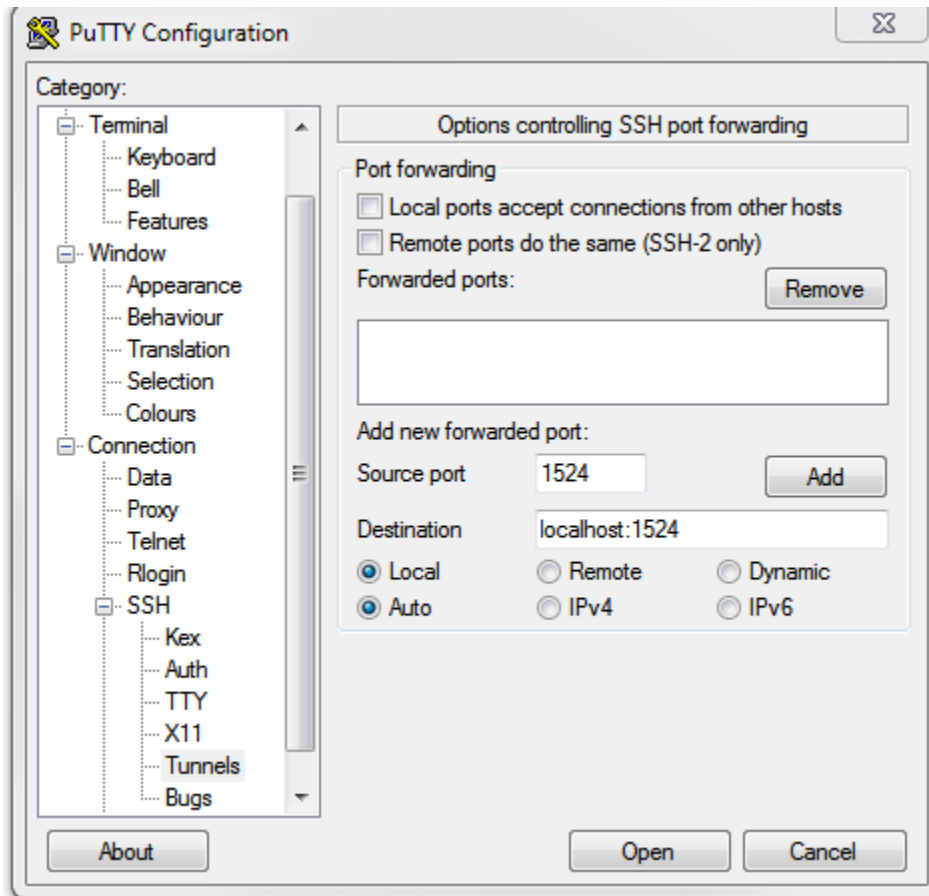


3. Add a tunnel under the Connection -> SSH -> Tunnels section:

Source port: **1524**

Destination: **localhost:1524**

Leave the "Auto" and "Local" radio buttons selected and click on the Add button



- Go back to the Session section and click on the Save button.

